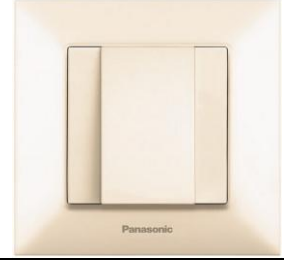


PRODUCT DATASHEET

Panasonic

Product Name :	Cable Outlet
Product Code :	WNTC07022**
Product Series :	Arkedia Slim



Technical Specifications:

Material :	ABS (Acrylonitrile Butadiene-Styrene)
------------	---------------------------------------

Installation:

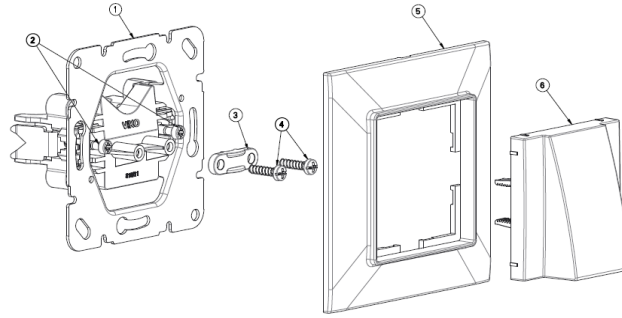
* Cable is placed between terminal slot (3) and mechanism , tighten the terminal screws(4) to complete the wiring. By rotating the cable, ensure that it's securely inserted in its place.

* Place the mechanism (1) into the case by loosening the claw screws (2). Tighten the claw screws (2) proportionally and secure the mechanism (1) in the case.

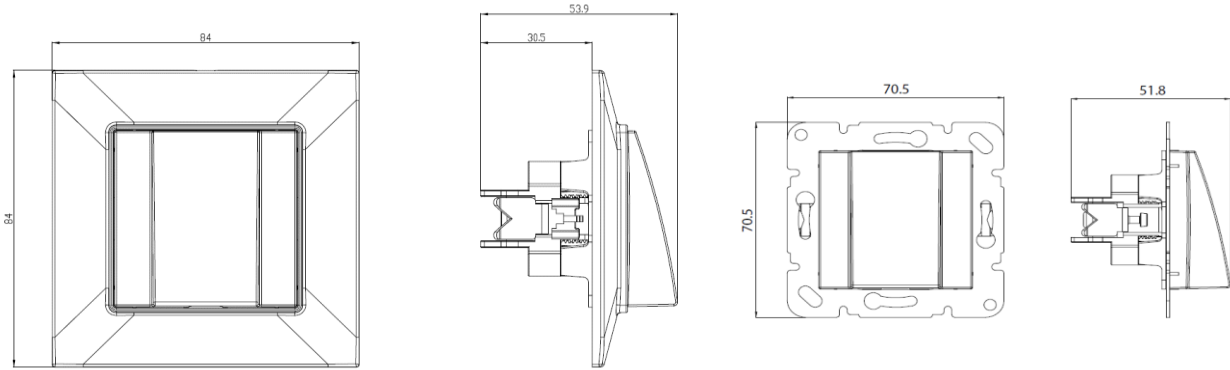
* Place the frame (5) on the secured mechanism (1).

* Press and place the cable outlet cover (6) as to align with mechanism slots and complete the installation.

- 1-Mechanism
- 2-Claw Screws
- 3-Terminal Slot
- 4-Terminal Screws
- 5-Frame
- 6-Cover



Dimensions:



Panasonic Electric Works Turkey Elektrik.San. ve Tic. A.Ş.
Abdurrahmangazi Mah. Ebubekir Cad. No: 44 Sancaktepe / İstanbul Tel: 0216 564 55 55 Fax: 0216 564 55 44
ewtr.panasonic.com