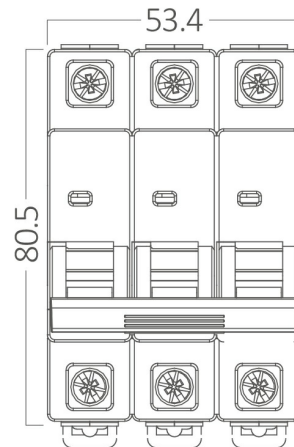
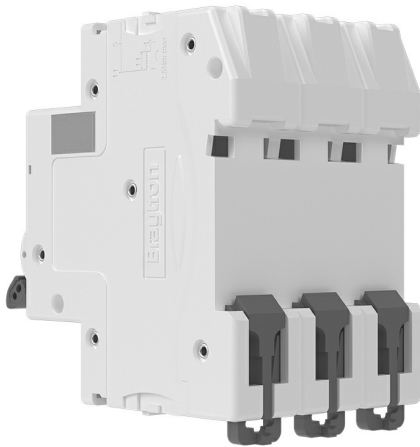
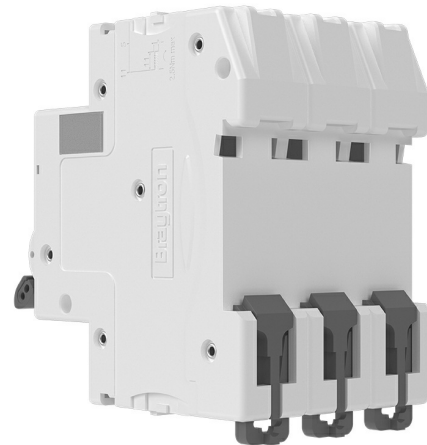


Braytron

FISA TEHNICA

MODEL BY80-00320

DESCRIEREA BRY-BMG1-3 C20-20A-3P C TYPE 4.5KA-MCB



BRAYTRON SRL

Bulavardul Iuliu Maniu, Nr.616, Sector 6, 061129, Bucuresti-
ROMANIA

info@braytron.com

www.braytron.com

SPOTVISION ELECTRIC & LIGHTING S.R.L

Bulavardul Iuliu Maniu, Nr.616, Sector 6, 061129, Bucuresti-
ROMANIA

sales@spotvisionelectric.ro

www.spotvisionelectric.ro

Page 1-2

Caracteristici Generale

Model	:	BY80-00320
Familia principală/Categorie	:	Electrical
Sub-familia/Subcategorie	:	MCB
Tip	:	BMG1-3 C20 MCB
Culoarea corpului	:	Alb
Garanție	:	5 ani
IP (Grad de protecție)	:	IP20
Poles	:	3P
The Number of Protected Poles	:	3

Caracteristici electrice

Tensiune	:	415V
Temperatura de lucru	:	-5°C +40°C
Frecvență	:	50/60 Hz
Current	:	20A
Network Type	:	AC Type
Nominal Working Voltage	:	415V~ 50/60Hz
Breaking Capacity	:	4.5kA
Rated Insulation Voltage	:	4000V

Informații despre ambalaj

Greutate netă	:	10,40 kgs
Greutate brută	:	11,50 kgs
Bucăți pe cutie (PCS/CTN)	:	40 pcs
Lungime	:	420 mm
Lățime	:	230 mm
Înălțime	:	185 mm
Cod EAN	:	5949097744709

Product Characteristics

Tripping Curve	:	C
Suitability for Insulation	:	Yes IEC/EN60898-1
Contact Position Indicator	:	Yes
Connection	:	1-25 mm ²
Tightening Torque	:	2 Nm
Relative Humidity	:	0.95
Terminal Screw	:	M5
Mounting Type	:	Plug-in
Mounting Support	:	DIN Rail

Dimensions & Weight

Lungime	:	80,5 mm
Lățime	:	53,4 mm
Greutate	:	260 gr